

WinFrog Device Group:	OUTPUT
Device Name/Model:	PLOW 2000
Device Manufacturer:	
Device Data String(s) Output to WinFrog:	NONE
WinFrog Data String(s) Output to Device:	See Telegram Specification section below.
WinFrog Data Item(s) and their RAW record:	OUTPUT NONE

DEVICE DESCRIPTION:

This driver outputs the specified data on a serial port for both the ship and plow/ROV vehicles in WinFrog. It is important to note that several conditions must be met before this data is output:

- 1) The device must be configured correctly at the I/O Devices window level (see below for details).
- 2) The OUTPUT, PLOW 2000, OUTPUT data item must be added to both vehicles in WinFrog.
- 3) Both vehicles must be tracking a line (i.e., have the Line Tracking function enabled).
- 4) Both vehicles must have valid positions. If the positioning source from either vehicle fails, this data item will stop outputting the KP data for both vehicles.

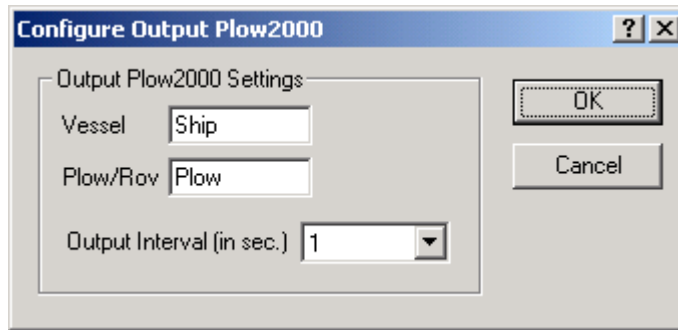
DEVICE CONFIGURATION INSTRUCTIONS

WINFROG I/O DEVICES > EDIT I/O:

Serial
Configurable Parameters

WINFROG I/O DEVICES > CONFIGURE DEVICE:

This device must be configured at the I/O Device window level. In the I/O Devices window, click the device name to select it, then right-click and select Configure Device. The Configure Output Plow2000 dialog box appears, as seen below.



The names for the Vessel and Plow/Rov must match exactly, in spelling and in case, with the names assigned to the vehicles in WinFrog. The output interval is also specified in this dialog box.

WINFROG VEHICLE > CONFIGURE VEHICLE DEVICES > DEVICE DATA ITEM > EDIT:

Adding the PLOW 2000 device creates the OUTPUT data item.

Data item: OUTPUT, PLOW 2000, OUTPUT

There are no edit options available for this data item. However, this data item must be added to both vehicles' device lists in order for the driver to output the data.

TELGRAM SPECIFICATION:

The data telegram output by WinFrog is in comma-delimited format and contains the following data;

Field	Data
1	vessel easting (m)
2	vessel northing (m)
3	hh::mm::ss
4	mm/dd/yyyy
5	vessel heading
6	vessel alongline (m)
7	vessel distance to go (m)
8	plow easting (m)
9	plow northing (m)
10	plow alongline
11	plow distance to go
12	vessel speed (m/s)
13	vessel distance offline (m)
14	plow offline (m)
	<CR><LF> terminated